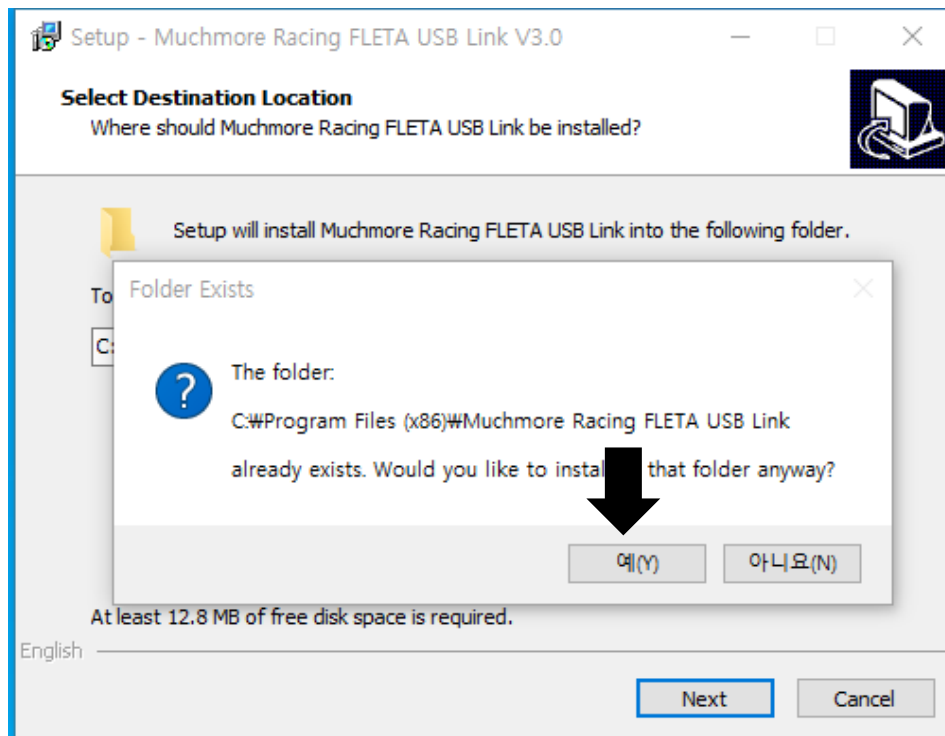


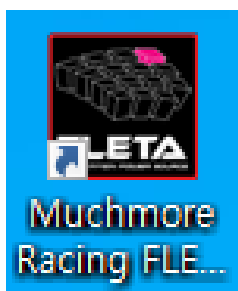
Program installation & program card update

 Muchmore_Setup_V3.0

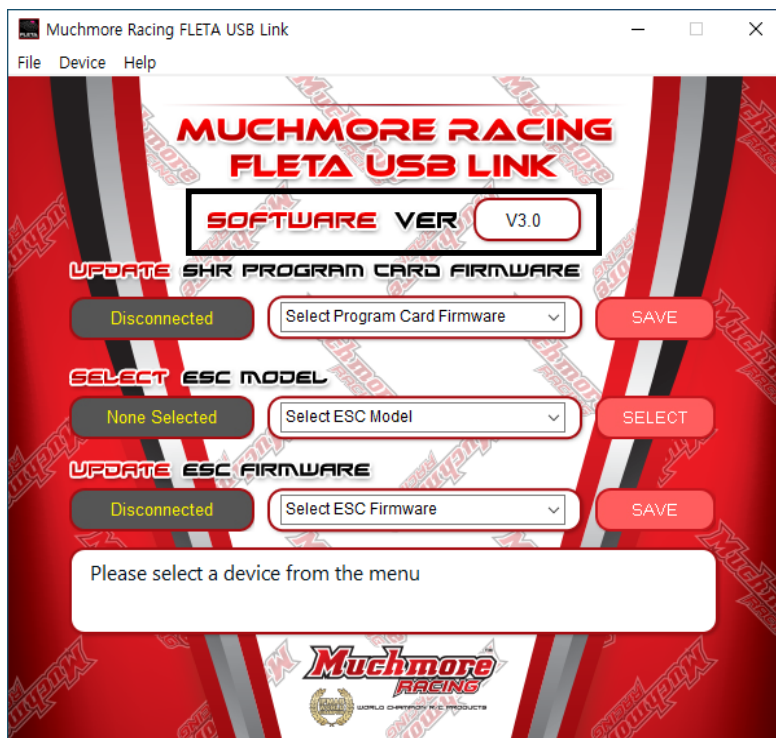
Run the installer.



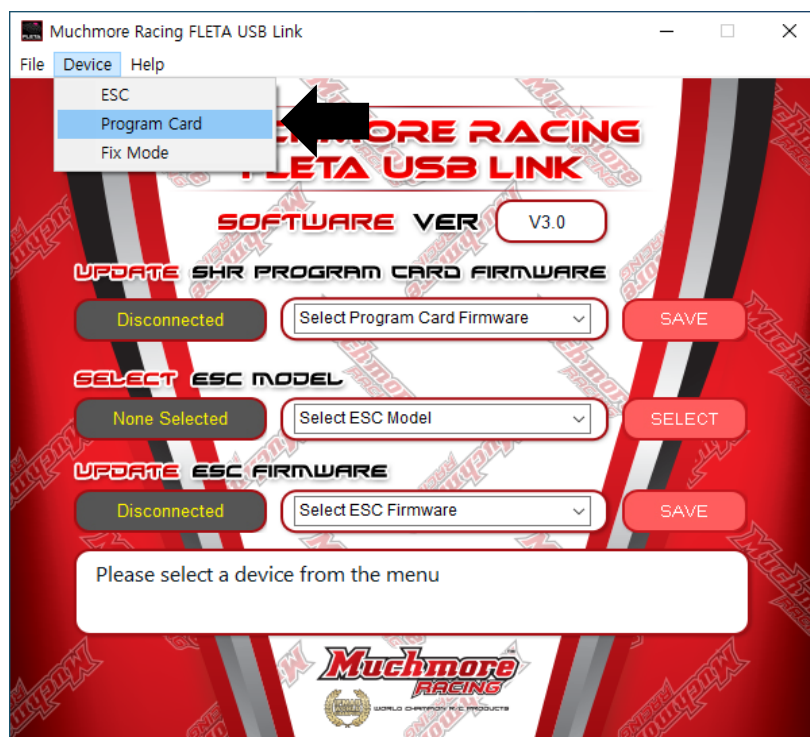
Muchmore Racing FLETA USB Link If it is already installed, select Yes



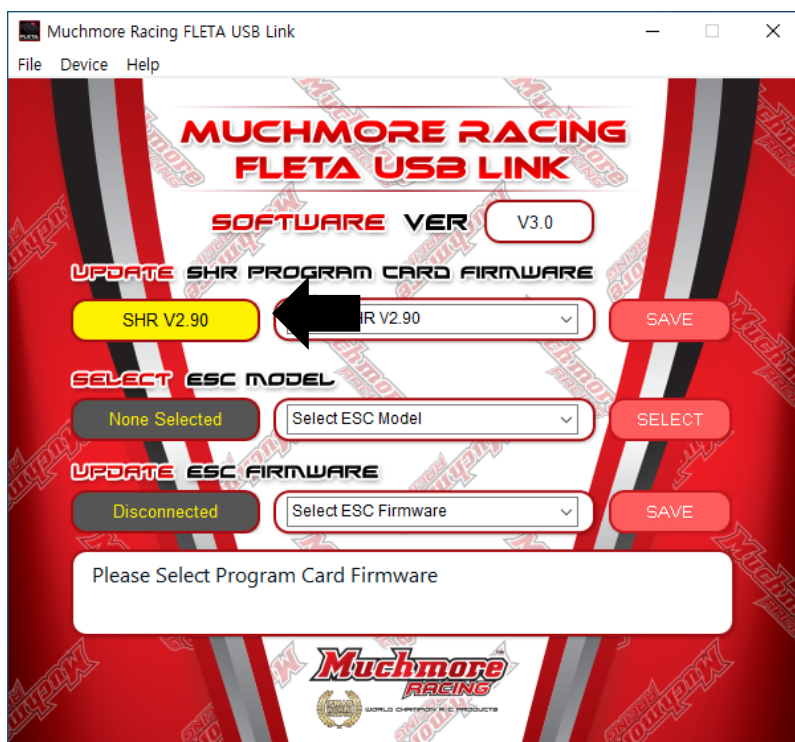
Installed Muchmore Racing FLETA USB Link run.



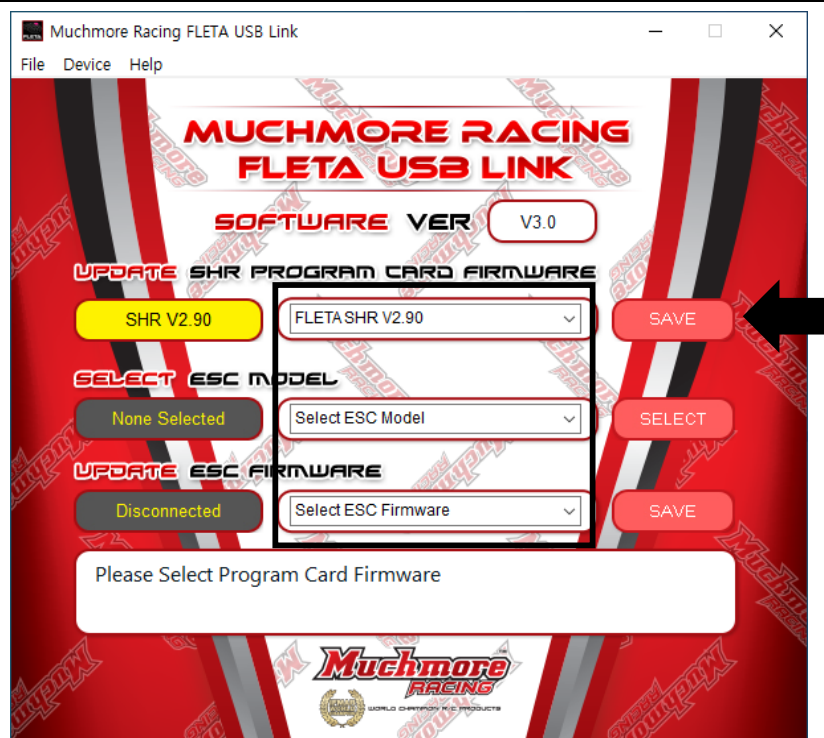
A window will appear as follows, and Software ver 3.0 confirm



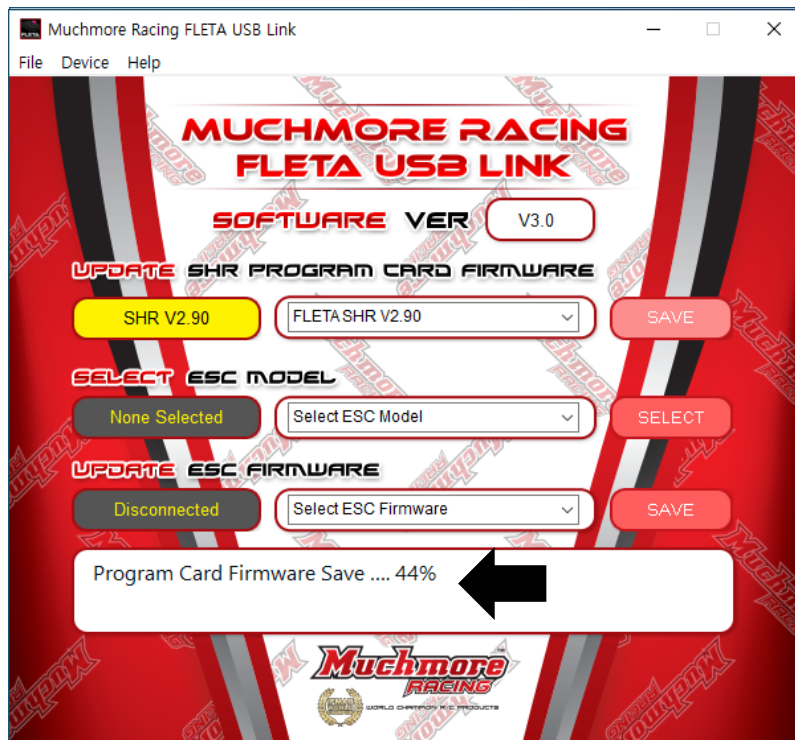
Choose the product you want



When the product is connected to a PC The Disconnected field is the current product's firmware. will be displayed



Select the firmware version you want to change and press the SAVE button. Click



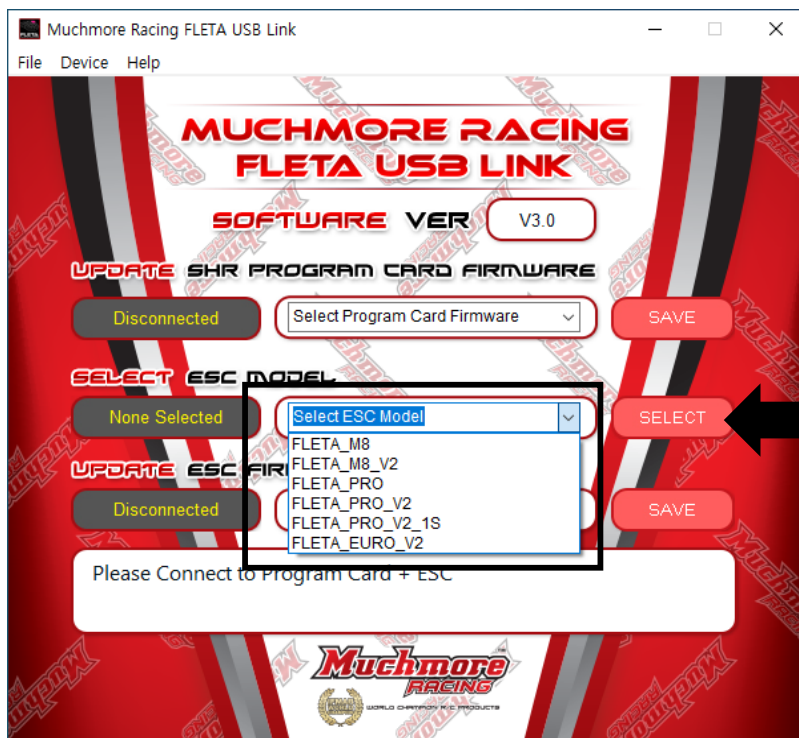
Progress is shown in %

When the update is complete, Program Card Firmware Save complete is displayed and it is completed.

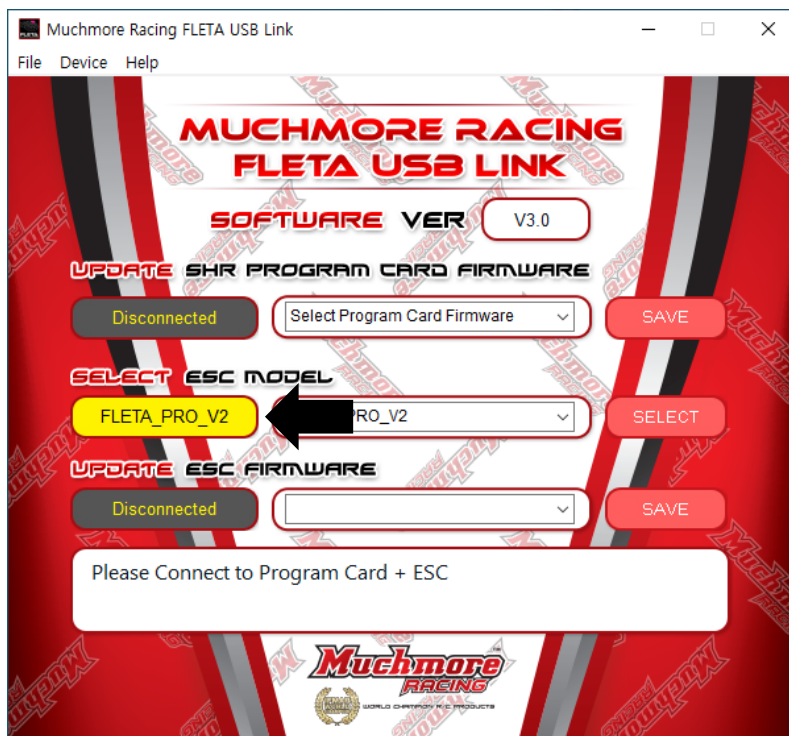
ESC UPDATE



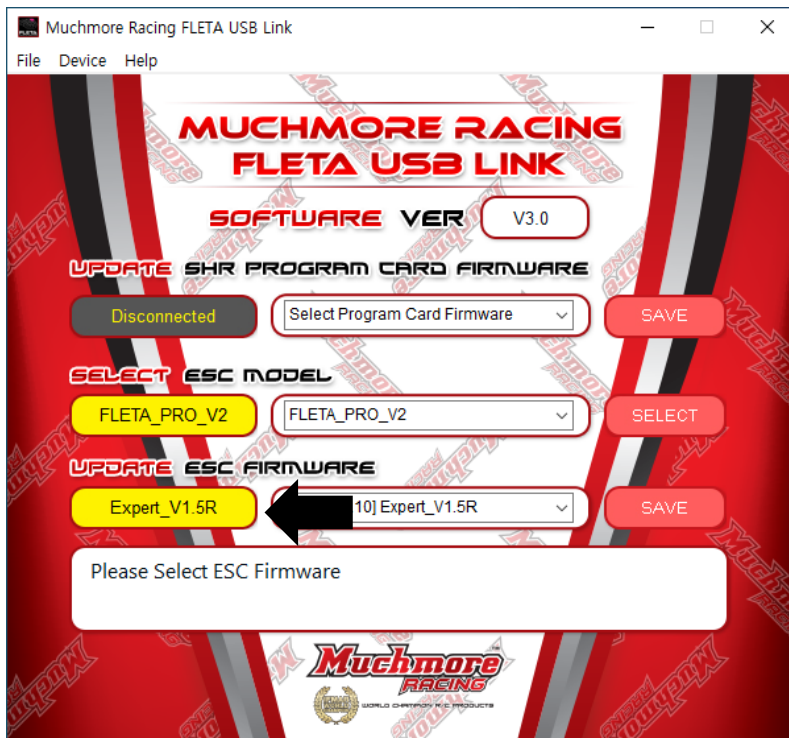
Select ESC from Device.



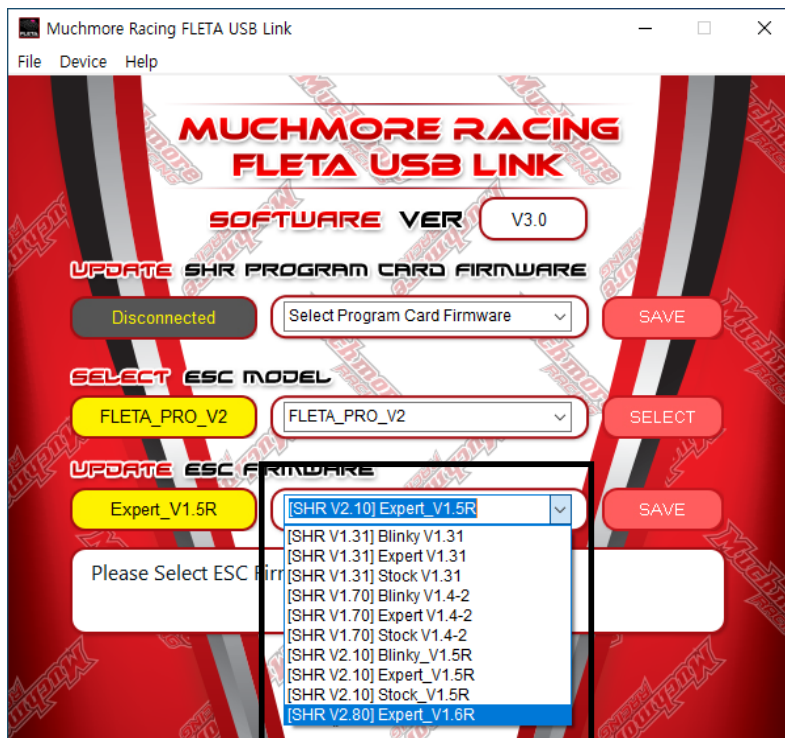
Select the ESC model and click SELECT



선택하면 None Selected 창에 선택한 모델이 표시가 됩니다.



When the program card and ESC are connected, the current ESC firmware version is displayed in UPDATE ESC FIRMWARE.



Select the version to update and click SAVE.



The version of the program card is also displayed for each ESC firmware. Please keep this in mind when updating the Program card.



Progress is indicated in %, and when the update is complete, ESC Firmware Save complete is displayed and it is complete